



Advisory # **2018-A-046**

Subject: 12608 – Non-Passenger Vehicle Screening – Cargo West

From: Airport Planning and Technical Services

Contact: Connor Brookhuis, Connor.Brookhuis@gtaa.com 416-776-5455

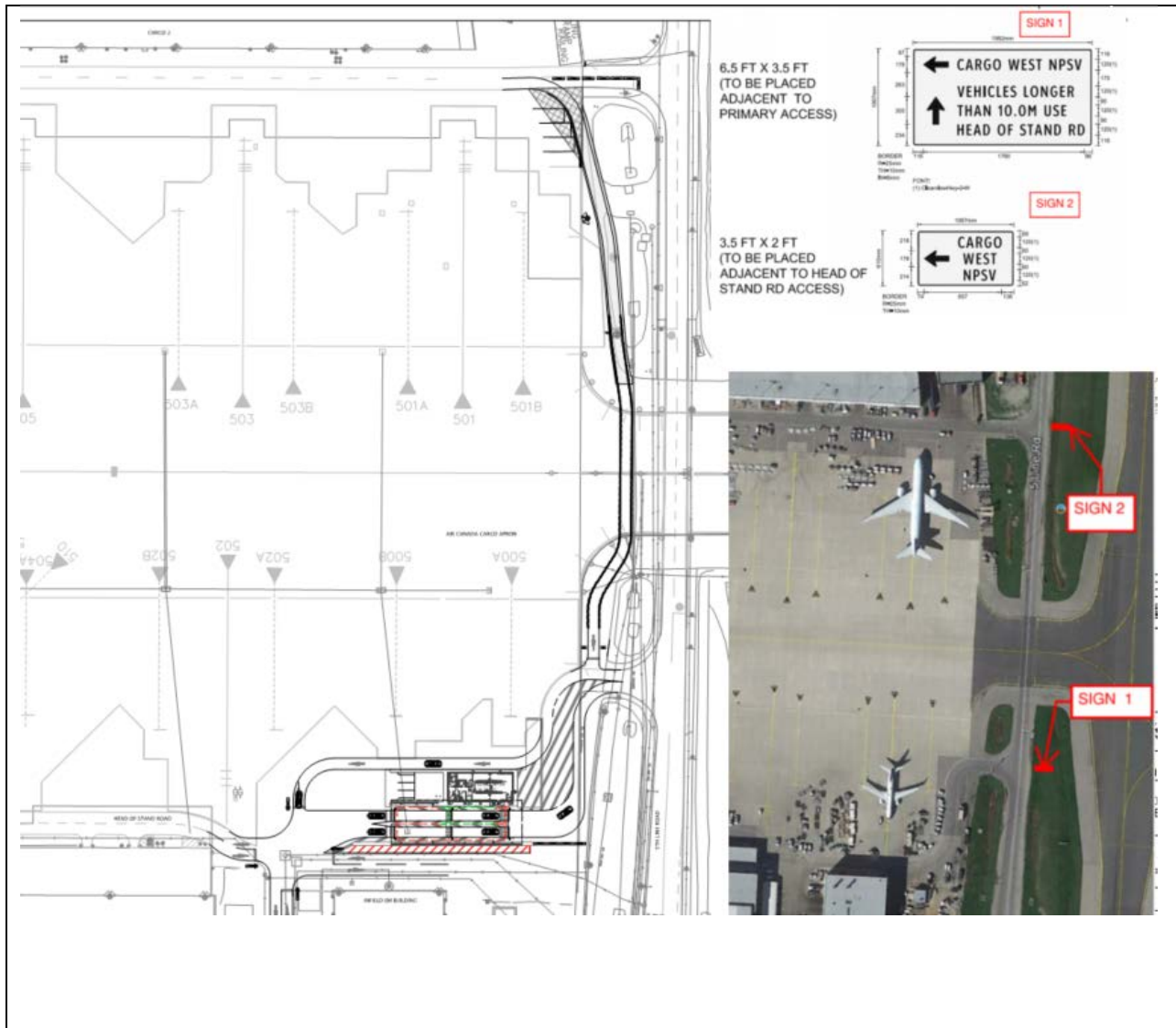
Date: September 18th. @ 09:00Hr.

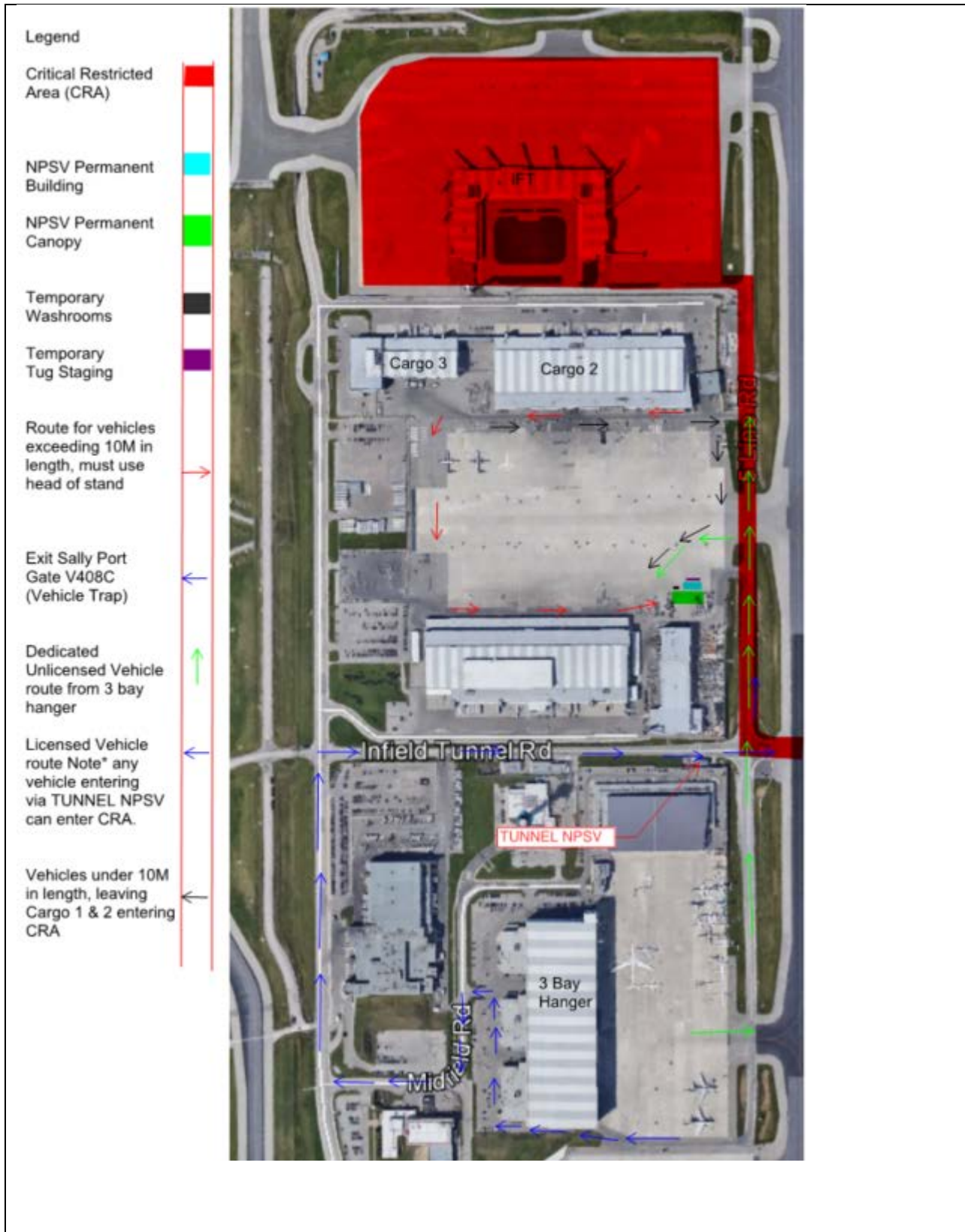
Effective 09:00 September 18, 2018, road widening construction adjacent to 5th line road will be complete and ready for use. Vehicles less than 10 meters in length exiting from Cargo 2 & 3 that need to enter the CRA will enter NPSV-Cargo via the new road as indicated below. Vehicles exceeding 10 meters in length will continue travelling via head of stand road to NPSV-Cargo.

Toronto Pearson Advisory

: 12608 – Non-Passenger Vehicle Screening – Cargo West

September 18th. @ 09:00Hr.





Please be advised of current operational process.

CURRENT OPERATION - NPSV - CARGO

CATSA AND SECURITY OPERATION

1. Lighting operation / regular operation switch No. 5 is turned to lighting operation (this mode disables pedestals (4) with card reader and buttons to open gate and allows loop to be activated through TMS system.

GATE ARM OPERATION

1. Gate arms at position (1) will not open if: (a) there is a vehicle in position (2) RAIC verification. or (b) gate arm (3) is in the open position. occupant/vehicle must wait until signaled by ASP guard to approach loop.
2. Gate arms at position (2) are not active and are in the upright position. Position (2) RAIC verification. Once ASP verifies RAIC, the occupant/vehicle is directed to move to position (3). If occupant/vehicle is rejected, ASP guard will escort vehicle and occupants to designated holding (6) and call ASO to escort them out of restricted area.
3. Gate arms (3) CATSA randomizing and screening operation. Once occupant/vehicle is cleared CATSA must instruct the driver to hold until gate arm is in upright position and light indicates green arrow, any movement prior to light turning green will result in an alarm.

OCCUPANT/ VEHICLE

4. Must **NOT** enter position (2) until signaled by ASP Guard to approach the loop and remain on the stop line indicated on the ground.

