



Advisory # **2018-A-047A**  
**CORRECTION**

**Subject: Changes to Employee Egress from Terminal 1 International and Transborder Sectors**

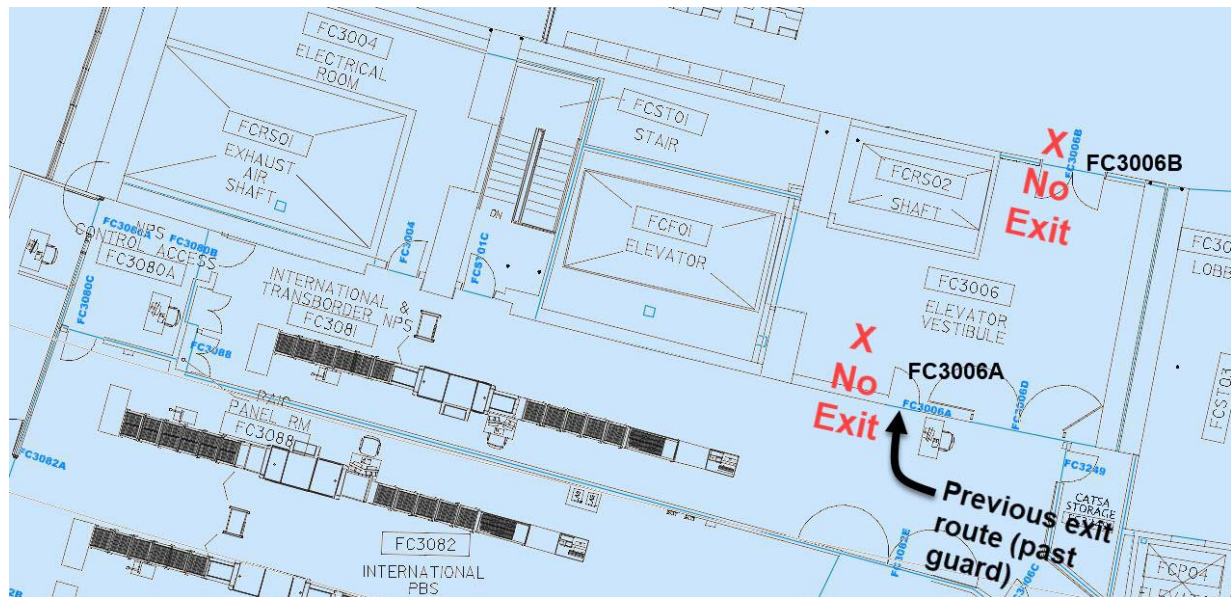
**From: Customer and Terminal Services**

**Contact: Paul Schenk, [paul.schenk@gtaa.com](mailto:paul.schenk@gtaa.com), 416-776-3471**

**Date: 2018-09-19**

Effective on Thursday, September 27, 2018, beginning at 1000L, there will be changes made to the existing route by which employees working in the T1 International and Transborder sectors post security exiting the Restricted Area to the public area of the Terminal on Level 3.

Due to ongoing construction, employees will no longer be able to exit to the public area through the old ITPC area by using the exiting doors FC3006A and FC3006B which are accessible through the freight elevator lobby FCF01 as shown in the diagram below:



**Current route will be closed**

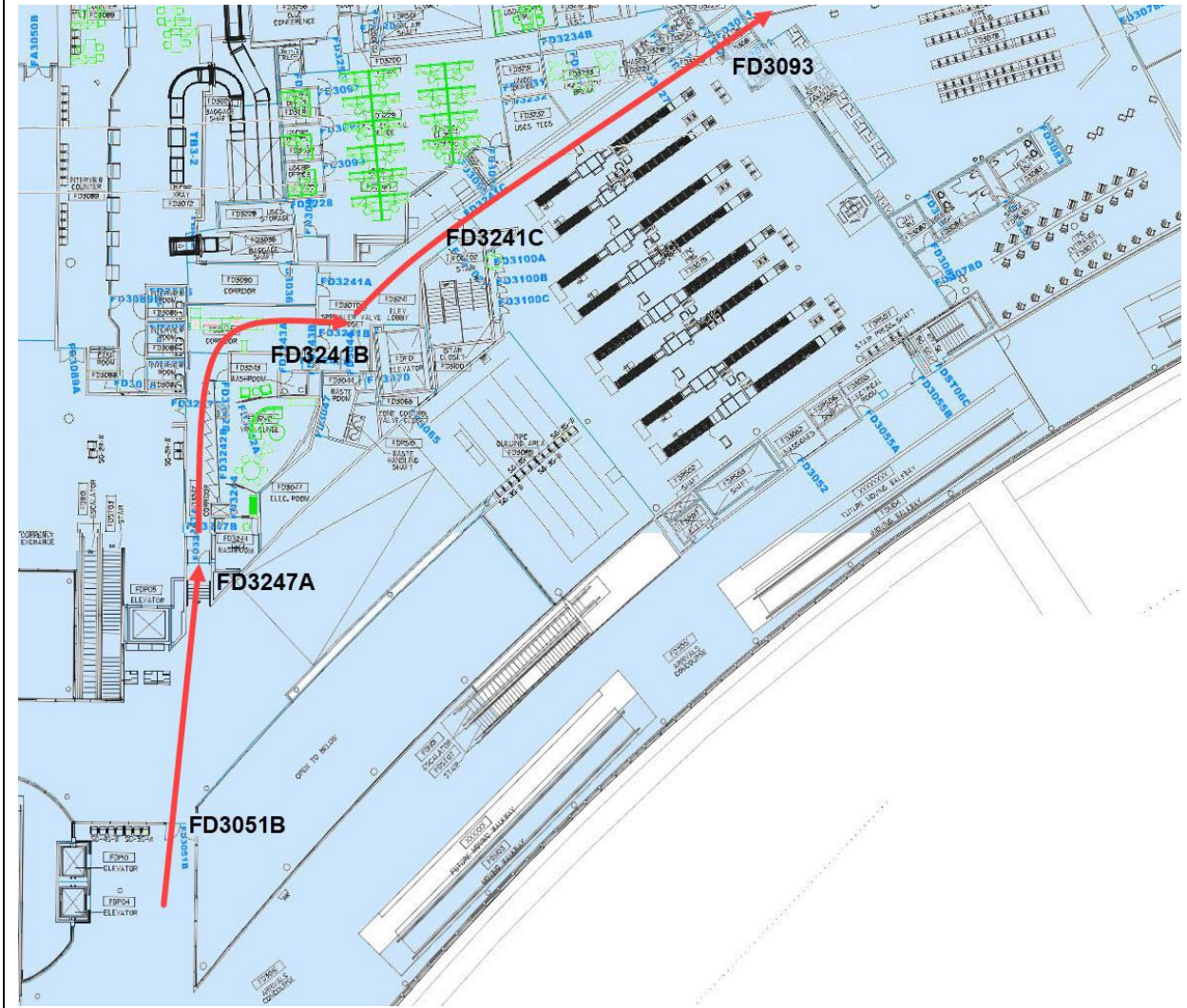
**New Route:**

Employees exiting the T1 International and Transborder sectors on Level 3 will be required to follow the route shown below.

On exiting the International Arrivals transfer corridor on the east side of Pier F, Level 3, through door FD3051B, go straight ahead, up the stairs and then through door FD3247A.

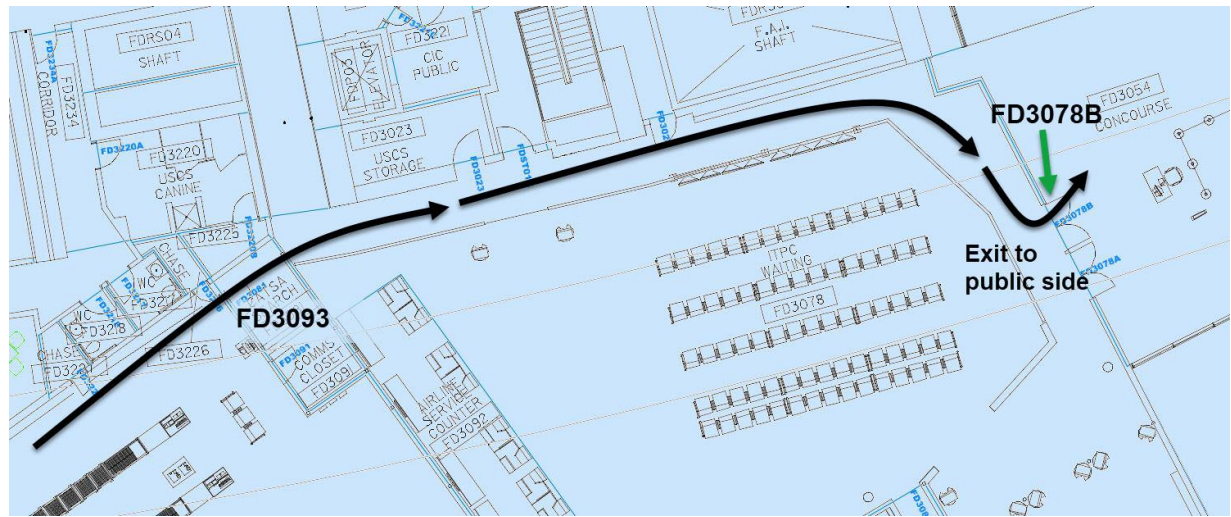
Proceed down the hallway, turning right to go through door FD3241B (swipe is required at this door).

Proceed straight to door FD3241C, proceeding straight down the corridor and then through door FD3093 into the Transborder ITPC area. Please see below diagram:



### Route through corridor to Transborder ITPC

Exit to the public area by swiping at door FD3078B on the East side of the ITPC. Make sure you are going through the correct doors and not the adjacent emergency exit doors (the correct doors are clearly marked).



Exit through ITPC