



Advisory # **2019-A-065**

Subject: Non-Passenger Screening of Vehicles (NPSV) – South and Controlled Egress Operation V315C

From: Aviation Services

Contact: Marjorie Thompson, Associate Director, Operations Delivery, 416-776-2794
OR Bryan Scott, Associate Director, Security Operations, 416-776-3567

Date: Tuesday, December 17, 2019

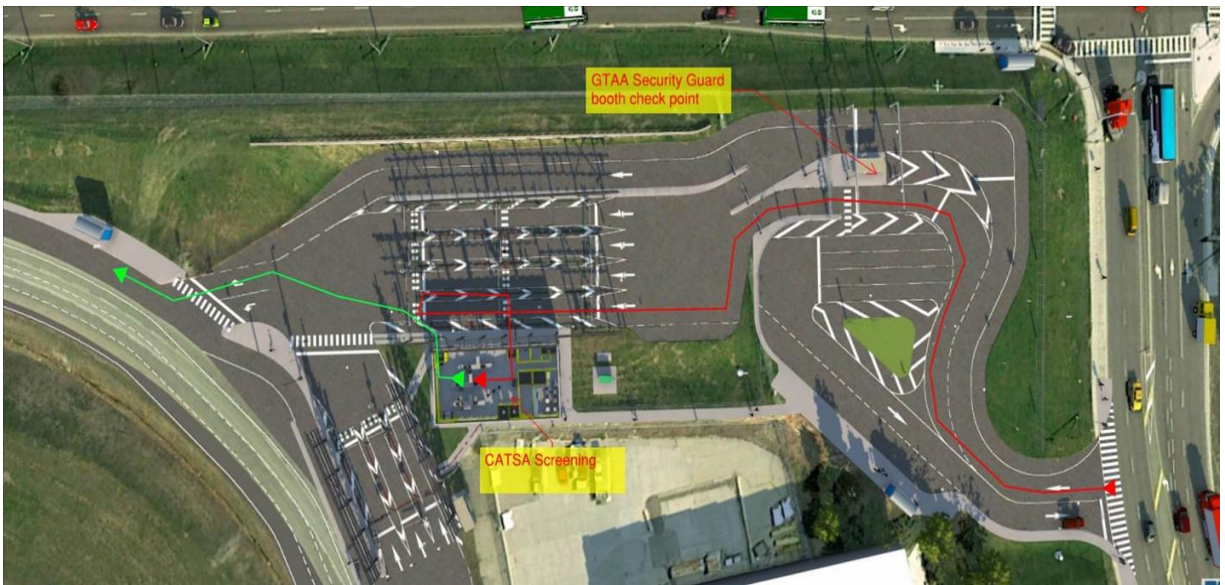
Please be advised that effective Thursday, December 19, 2019 at 1000L the current entrance and exit to/from airside located at V315K on Flightline Drive will be closed. The new entrance to airside will be moved to the NPSV South and the exit will revert to V315C.

Entering the NPSV South from Convair Drive:

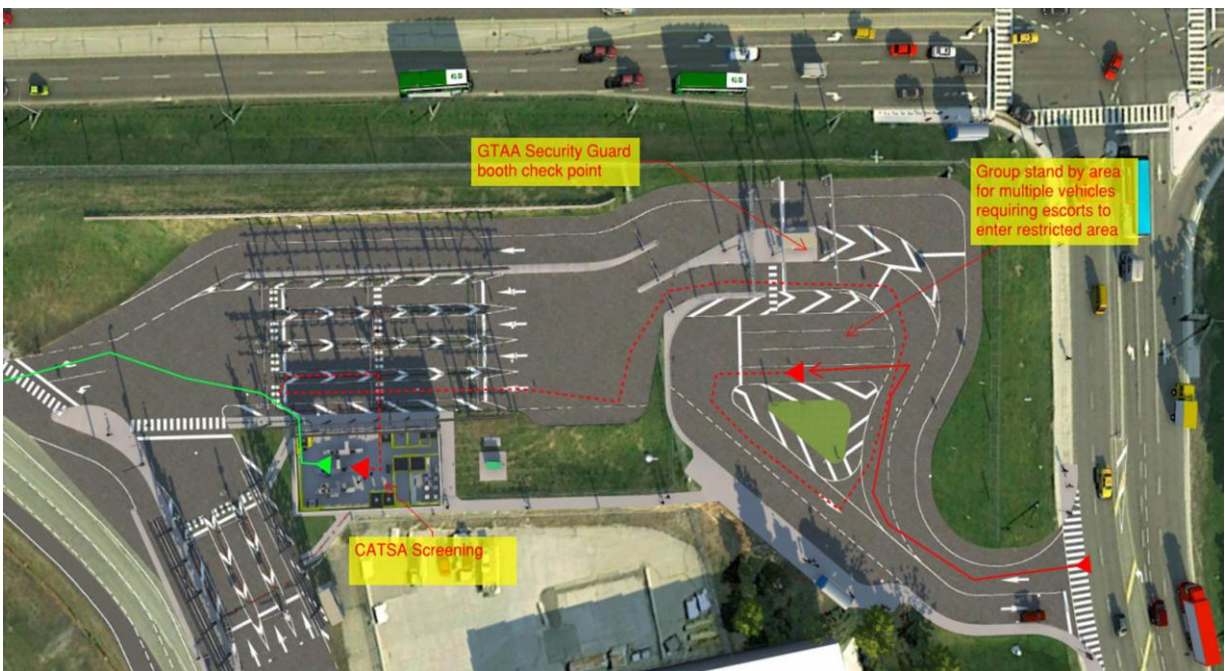
***NOTE:**

All vehicles must stop at the traffic signal until the light indicates green to proceed.

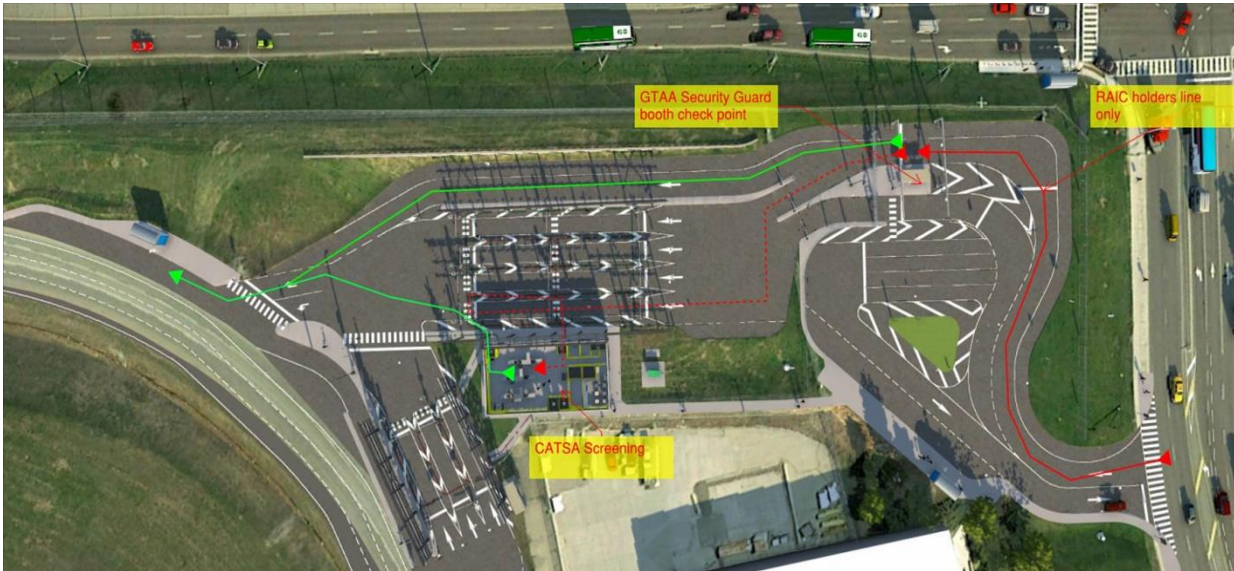
1. Single vehicle with any mix of passengers that hold a temporary pass.



2. Multiple vehicles with temporary passes requiring escorts are to meet at the dedicated parking area. They proceed to Greater Toronto Airports Authority (GTAA) guard booth for temporary pass issuance. Vehicles will then follow escort in vehicles to guard booth to access Canadian Air Transport Security Authority (CATSA) screening.

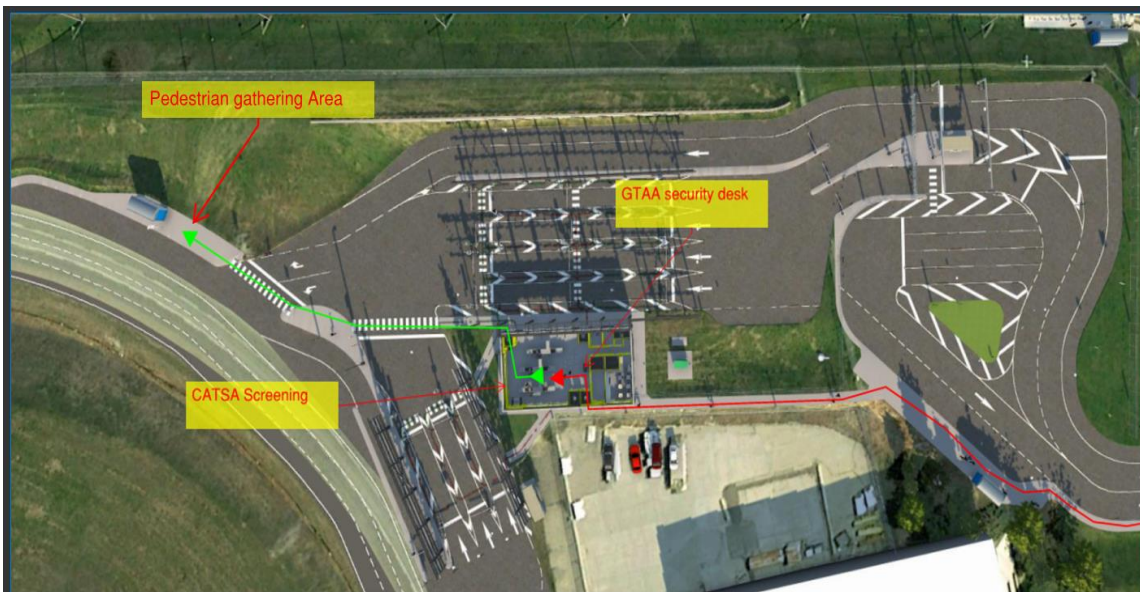


3. Restricted Area Identity Card (RAIC) holders to proceed to the right side of the GTAA guard booth for randomizing. Green indicates approved to proceed, red indicates selected for screening.

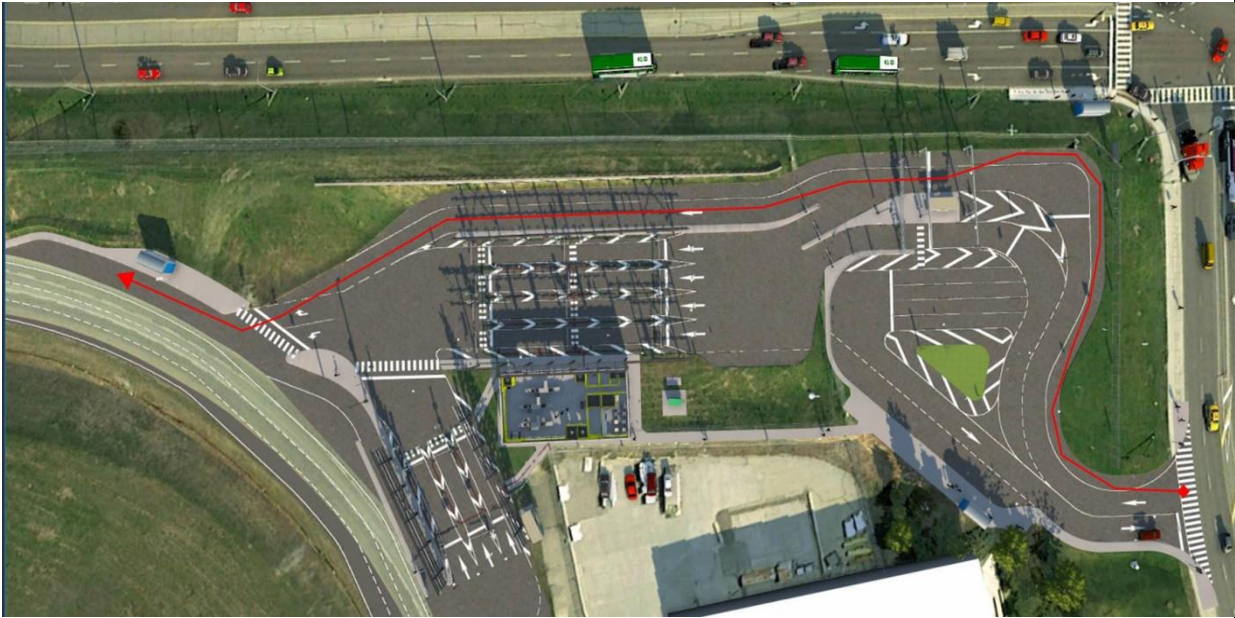


4. Pedestrians are to proceed to the back of the Screening building groundside. Once in the building, they must proceed to the GTAA guard booth for RAIC validation / randomizer and temporary pass issuance. Once screened, they can proceed to the gathering area for transport. This applies to bus tours and aircraft grooming.

Should a pedestrian find they need to leave the Critical Restricted Area (CRA) once screened, then they must return groundside through the Screening building.



5. For Emergency Vehicles entering from Convair Drive, the GTAA guard will push the by-pass button to release the gate arm and gate. The GTAA guard will then inform CATSA of this action.

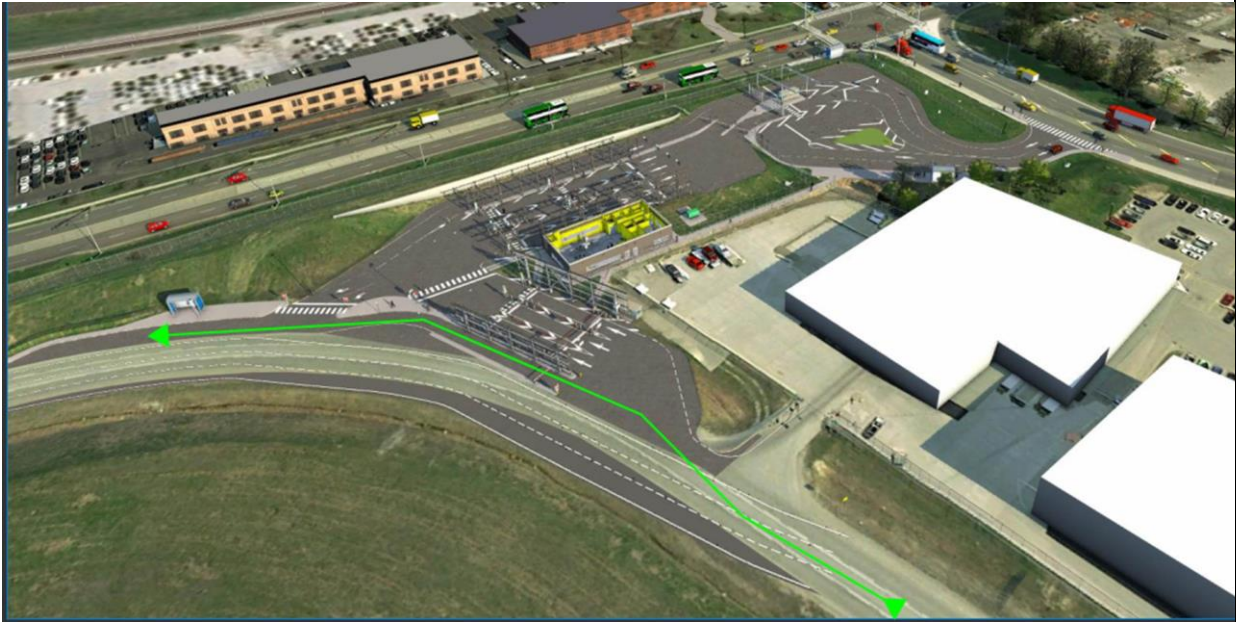


Entering the NPSV South from South Service Road:

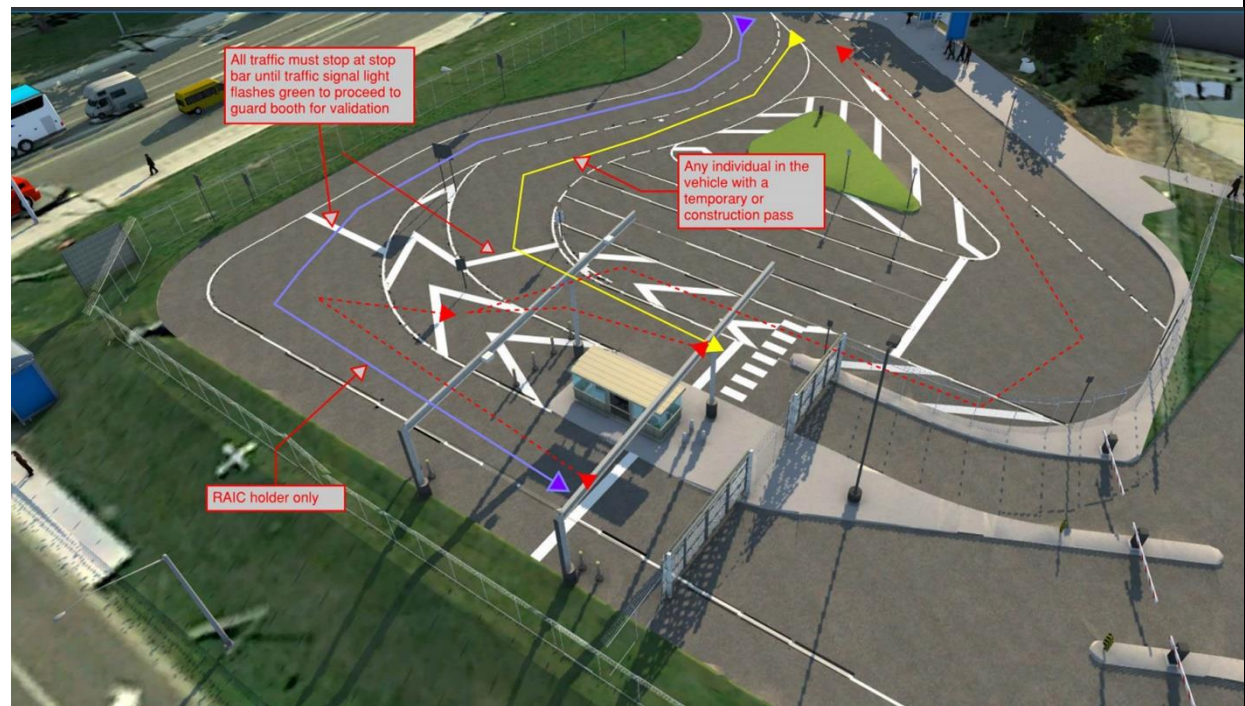
6. All vehicles travelling on South Service Road are required to proceed to NPSV - South for screening. The GTAA guard will screen the passenger(s) and will randomize via hand-held device. If selected, the vehicle operator will proceed to CATSA screening, indicated in red. If not selected, the operator will proceed to the CRA indicated by green.



7. Authorized by-pass users: Canada Border Services Agency (CBSA) and Emergency Vehicles. The GTAA guards will push the by-pass button to allow CBSA and Emergency vehicles through by-pass. The Guards are to inform CATSA of this action.



8. Vehicles / passengers that have been rejected to enter NPSV South or who have entered the RAIC lane with the wrong credentials will reverse and maneuver to the perimeter round-about to leave the security check point or enter the correct lane. All drivers must wait until pass through area is cleared of pedestrian and other vehicle traffic before leaving the area.



Gate V315C located at Electra Road will no longer be an access point. All vehicles will exit at this point via monitored vehicle-controlled egress. The only vehicles that will be allowed entrance will be Emergency and Snow equipment during Emergencies and/or Snow events. This will be communicated via Security Operations Control (SOC).

The Exit at this location has changed. Please note operation below:

1. Vehicle will approach V315C (controlled egress)
2. Press the intercom button to request exit.
3. The Remote guard will activate the gate.
4. Proceed slowly to the next gate. This gate will not open until the vehicle is within the gate parameters and the guard closes the first gate.
5. Once the vehicle is contained, the guard will open the second gate to exit.

Oversized Vehicles:

1. Vehicle will approach V315C (Controlled egress).
2. Press the intercom button to request exit.
3. The Remote guard will detect that the vehicle exceeds the length of the controlled egress. They will monitor the vehicle movement between both gates keeping the first gate open until the vehicle is cleared.

