



Advisory # **2021-A-037**

Subject: Closure of Taxiway C – Phases 4 and 5

From: Airport Operations

Contact: Nick Matveev, nick.matveev@gtaa.com 416-776-3184 (O) / 416-802-9387 (M)

Jeremy Schoular, Jeremy.schoular@gtaa.com 416-776-3437 (O) / 416-770-1087 (M)

Date: Thursday, August 19, 2021

Taxiway Charlie temporary closure of Phases 4 and 5 will commence on Tuesday, August 24, 2021 @0630, as follows:

Phase 4 and Phase 5

Tuesday, August 24, 2021 @0630 until Friday, September 10, 2021 @ 1800:

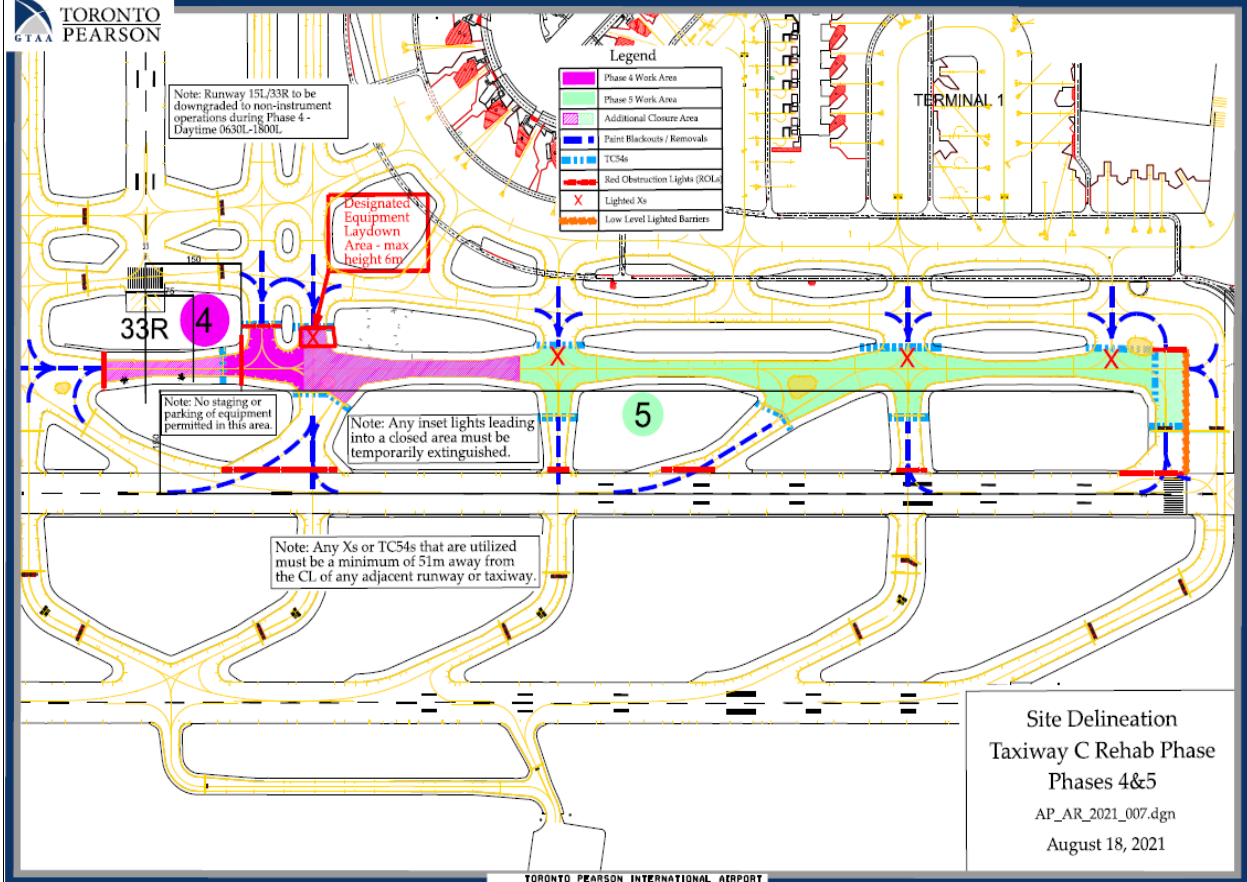
- TWY C Closed between TWY C2 and RWY 24R
- TWY C1, D3, C3, D5 Closed (between TWY D and RWY 24R)
- TWY B between TWY D and TWY C, TWY A between TWY D and RWY 24R Closed
- RWY 06L/24R Closed, available as taxiway (MON-SAT 0630L-1800L) (1 hour recall)
- RWY 15L/33R Downgraded to Non-Instrument (MON-SAT 0630L-1800L) (1 hour recall)

Phase 5

Saturday, September 11, 2021 @0630 until Friday, October 15, 2021 @ 1800:

- TWY C Closed between TWY B and RWY 24R
- TWY C1, D3, C3, D5 Closed (between TWY D and RWY 24R)

- TWY A between TWY D and RWY 24R Closed
- RWY 06L/24R Closed, available as taxiway (Daily 0630L-1800L) (1 hour recall)



If you have any questions or concerns regarding this work, please contact Nick Matveev nick.matveev@gtaa.com.