



Curbside Management and Traffic Flows



Agenda:

- Current State of Curbside Performance
- Near term Outlook and Improvements
- Longer Term Outlook and Improvements

Current State of Curbside Performance

Terminal 1 and Terminal 3 curb frontages facilitate approximately 75-80% of total passenger demands ^A and are critical to managing the airport's groundside operations.

Curb Level	2025 Key Curb Challenges	Observed/Anticipated Impacts
T1 Ground	Rideshare frontage exceeds capacity (inner curb) ●	Periodic lane blockages and crowding
T1 Arrivals	Periodic surge occurrences ●	Moderate queues/travel time delays
T1 Departures	Periodic surge occurrences ●	Moderate queues/travel time delays
T3 Arrivals	Public curb demands exceeds capacity (middle curb) ● Rideshare demands exceeds capacity (outer curb) ●	Double-parking and extended queues Lane blockages, queues and delays
T3 Departures	Early AM demand capacity challenges ●	Queues/travel time delays

- Analysis based on forecasted busy summer day schedule, applying 2024 groundside modal splits and other recent data collection efforts, to assess Level of Service of curb frontages conditions.
(Based on ACRP Best Practices in addition to routine monitoring of curb operations).

Near-Term Outlook and Improvements - Irregular Operational issues and mitigations



Figure 1: Emergency responses at T3 Departures

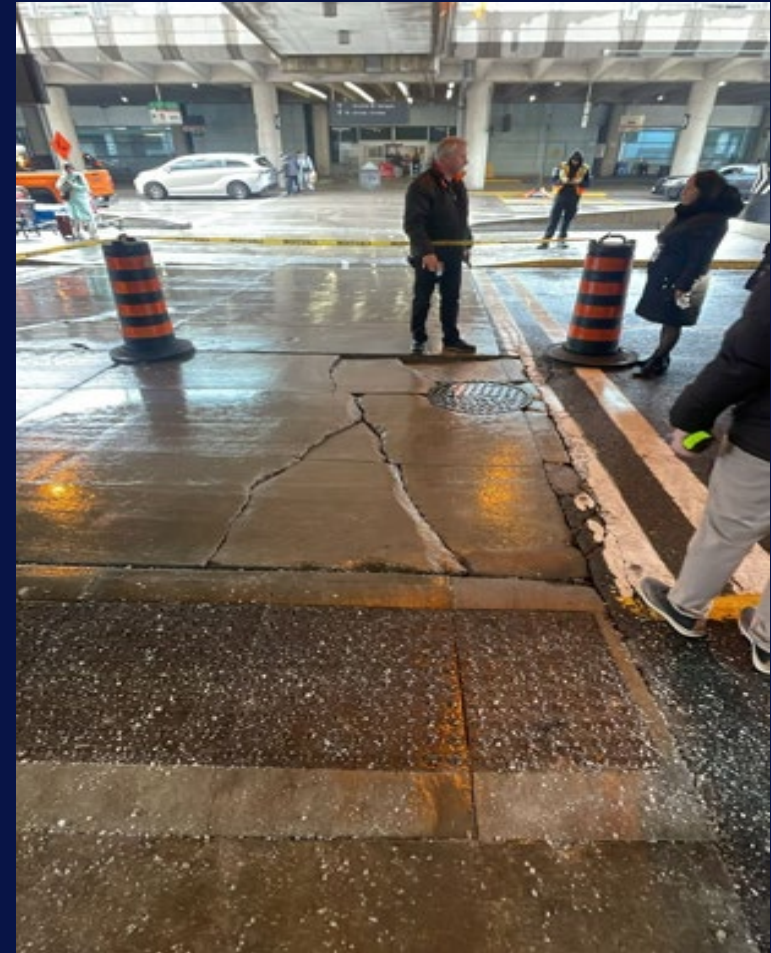


Figure 2: T3 Arrivals emergency repairs

Near-Term Outlook and Improvements



Figure 3: Double-parking occurrences at T1 Arrivals



Figure 4: T3 Arrivals Public Curb Crowding



Figure 5: T1 Ground TNC traffic issues

Near Term Outlook and Improvements - Mitigations

- Create awareness of Kiss and Fly Lot, Cell Phone Lot
- Enhanced Dwell Time Enforcement
- Advanced/Enhanced communications (VMS, social media, QR Codes and website)
- Operational Efficiencies:
 - Expanded data collection efforts
 - Improved operational communication/collaboration with on-site staff and IOCC
 - Incident reviews and rehearsals
 - Planning for LIFT disruption (construction impacts, policy and playbook development)

Longer Term Outlook and Improvements

The LIFT Program includes landside improvements to infrastructure and systems in the form of additional surface access capacity and improvements to curbside operating and capacity conditions.

ACCELERATOR

Upgrades to operational assets, including increased surface access capacity through interim facilities.

Improvements include:

- Decongestion of Terminal 3 through Interim Terminal build out.
- New road capacity
- Upgrade/replace groundside assets to maximize capacity/resiliency of existing capacity

GATEWAY

New expansion of Terminal 1, including additional surface access capacity.

Improvements include:

- Additional T1 curb frontage
- Reconfigured and optimized landside road network (e.g. Silver Dart Drive and connecting roads)
- Protection of additional T1 Parking capacity

T1/T3 REVITALIZATION

Modernization of T1/T3 to enable connectivity, digitalization of the passenger journey and operations.

Improvements include:

- Upgrade/replace groundside assets to maximize capacity/resiliency
- Optimization of parking capacity, internal circulation, and experience





Thank You