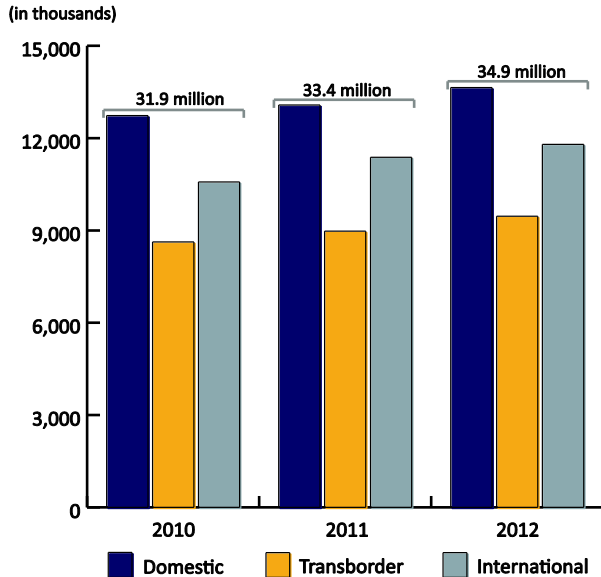


CONSULTATIVE COMMITTEE UPDATE

MARCH 2013

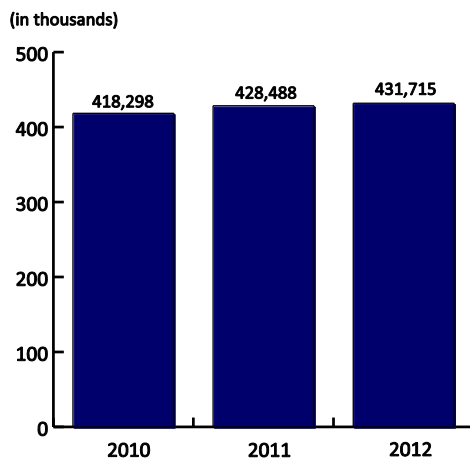


Passenger Traffic at Toronto Pearson (2010–2012)



Note: These numbers are estimates.

Runway Movements at Toronto Pearson (2010–2012)



Note: These numbers are estimates.

New Chair of the GTAA Board of Directors



Vijay Jeet Kanwar was appointed Chair of the GTAA Board of Directors, effective January 1, 2013.

Mr. Kanwar has been a Director on the Board since May 2006. He was appointed to the Board by the Province of Ontario, and has served on the following committees of the Board: Planning and Development,

Audit, and Human Resources and Compensation. He was involved in the Board search for our current CEO.

Mr. Kanwar is President and Chief Financial Officer of KMH Cardiology and Diagnostic Centres, a leading provider of cutting edge medical diagnostic services with locations in Canada and the United States. He is also involved in commercial real estate development and specialized computer software development.

Mr. Kanwar is focused on creating a sustainable airport authority that maintains the highest standards of corporate practice and manages growth in a fiscally responsible manner.

The GTAA's 15-member Board is drawn from people nominated by the four neighbouring regional municipalities, the City of Toronto, the provincial and the federal governments, as well as professional associations.

Airline Fees Reduced in 2013

The GTAA has lowered fees charged to air carriers operating at Toronto Pearson for 2013. This is the sixth consecutive year that these fees have been reduced or held steady at Toronto Pearson.

Starting January 1, air carriers will see an average 10 per cent drop in fees. The GTAA plans to hold these fees steady for the next three years.

The new fee structure is based on an asset recovery model similar to those used at other international airports.

“The continued reduction in costs to airlines at Toronto Pearson is good news,” said Tony Tyler, International Air Transport Association Director General and CEO. “It will improve Toronto’s competitiveness for business and tourism, and enable aviation to play an even bigger role in driving economic growth.”

Key drivers for the fee reductions were successful cost containment during 2012 and a projected increase in passenger traffic expected in 2013. Comparing traffic in the first nine months of 2011 and 2012, Toronto Pearson saw a 4.1 per cent increase in passenger traffic. We anticipate further passenger growth for 2013.

“We are pleased to offer a [fee] structure that will result in a decrease to our airline partners,” said Howard Eng, GTAA President and CEO. “This decision supports our business focus to support our communities with increased access to all points on the globe.”

Air Services

This year we will see the return of **Aeroflot**, **Russian Airlines** and **Aeromexico**, along with intended operations by **Egyptair**, Saudi Arabian Airlines (**Saudia**) and Air Canada’s new low-cost operation called **Rouge**.



Rouge will begin flying July 1 with two Boeing 767s and two Airbus 319s, mainly to holiday destinations in Europe and the Caribbean, such as Athens, Venice, Edinburgh, Punta Cana, Liberia, San Jose, Puerto Plata, Varadero, Kingston, Santa Clara, Holguin and Samana.

In addition, **Air Canada** will begin flying non-stop to Istanbul, Turkey, and Seoul, South Korea, and will increase the number of seats to Copenhagen, Denmark, and Beijing, China.

On June 1, **EgyptAir** begins flights between Toronto and Cairo, operating four times per week with Boeing 777 aircraft.

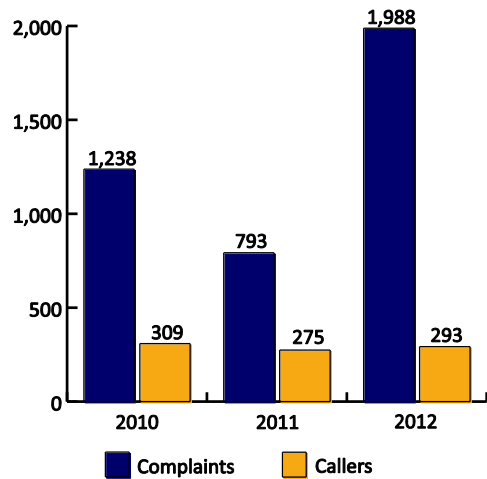
British Airways and **Air Canada** have increased the size of their flights to Europe this summer adding significant numbers of seats to many destinations. In addition, **Jet Airways** has increased the size of its daily aircraft serving Canada from both Belgium and India to an Airbus A330-300, which adds 75 seats per day each way on the route.

Sunwing Airlines has unveiled its European Summer 2013 operational program, which sees the airline place its “WG” code on **Arkefly**’s twice-weekly Toronto–Amsterdam route, between June 24 and September 2, under codeshare agreement. Sunwing will not be operating any of its own (or chartered) aircraft to Europe this coming summer. Arkefly will fly to Toronto Pearson on Mondays and Fridays with Boeing 767 aircraft.

Airports Going Green Award

Toronto Pearson was recognized as a sustainability leader and innovator last year, receiving the Chicago Department of Aviation’s Airports Going Green award on November 6, 2012, for our energy management program.

Noise Complaints and Callers
(2010–2012)

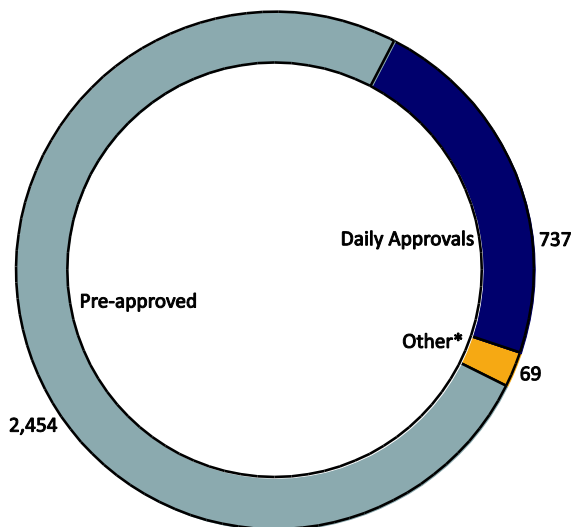


Early Turn Trial

The trial program allowing early turns on the north/south runways and extended prop turn hours continues.

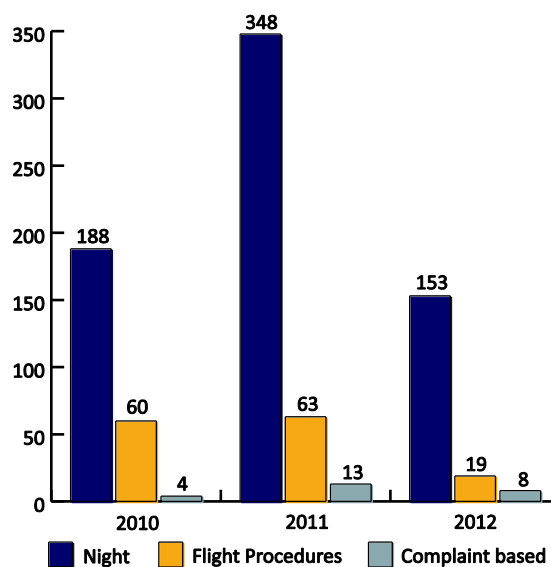
Throughout the trial so far, from March 3, 2008, to December 31, 2012, 2,039 eligible jet aircraft (19 per cent) conducted an early turn off the north/south runways, resulting in six complaints. During this time, 2,744 props (92 per cent) conducted early turns between the hours of 6:30 and 6:59 a.m., while 4,005 (84 per cent) initiated early turns between 11:01 and 11:30 p.m., resulting in 126 complaints.

Restricted Hours Flights
(November 2012–January 2013)

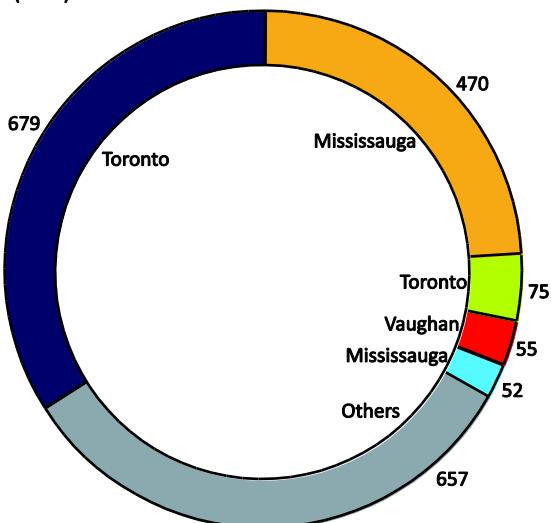


*Other operations include medevac flights, weather alternate flights, military and police.

Enforcement Investigations
(2010–2012)



Top Five Callers vs. All Other Callers
(2012)



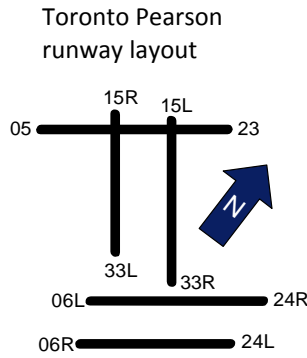
This chart shows the number of complaints made by our five most frequent callers, identified by location.

Comparison of Aircraft Movements and Noise Complaints by Runway Operation

From January to December 2012, there were 431,715 aircraft movements at Toronto Pearson, resulting in 1,988 complaints, of which 1,138 were related to aircraft arrivals, 840 were related to aircraft departures, and 10 were unrelated to runway operations.

The following tables attribute noise complaints to various runway operations.

Arrivals in 2012		
Runway	Movements	Complaints
From east		
23	43,633	103
24R	44,104	375
24L	41,165	399
From south		
33R	688	31
33L	7,158	71
From west		
06R	17,450	36
06L	12,776	35
05	44,861	59
From north		
15R	1,105	17
15L	3,048	12
Total	215,988	1,138



Departures in 2012		
Runway	Movements	Complaints
To east		
05	20,316	20
06L	50,681	211
06R	1,549	8
To south		
15L	1,192	38
15R	388	9
To west		
24L	1,466	7
24R	54,902	263
23	71,390	209
To north		
33L	1,324	5
33R	12,519	70
Total	215,727	840