

2009 NOISE MANAGEMENT REPORT

Working with our Community for a Quieter Future

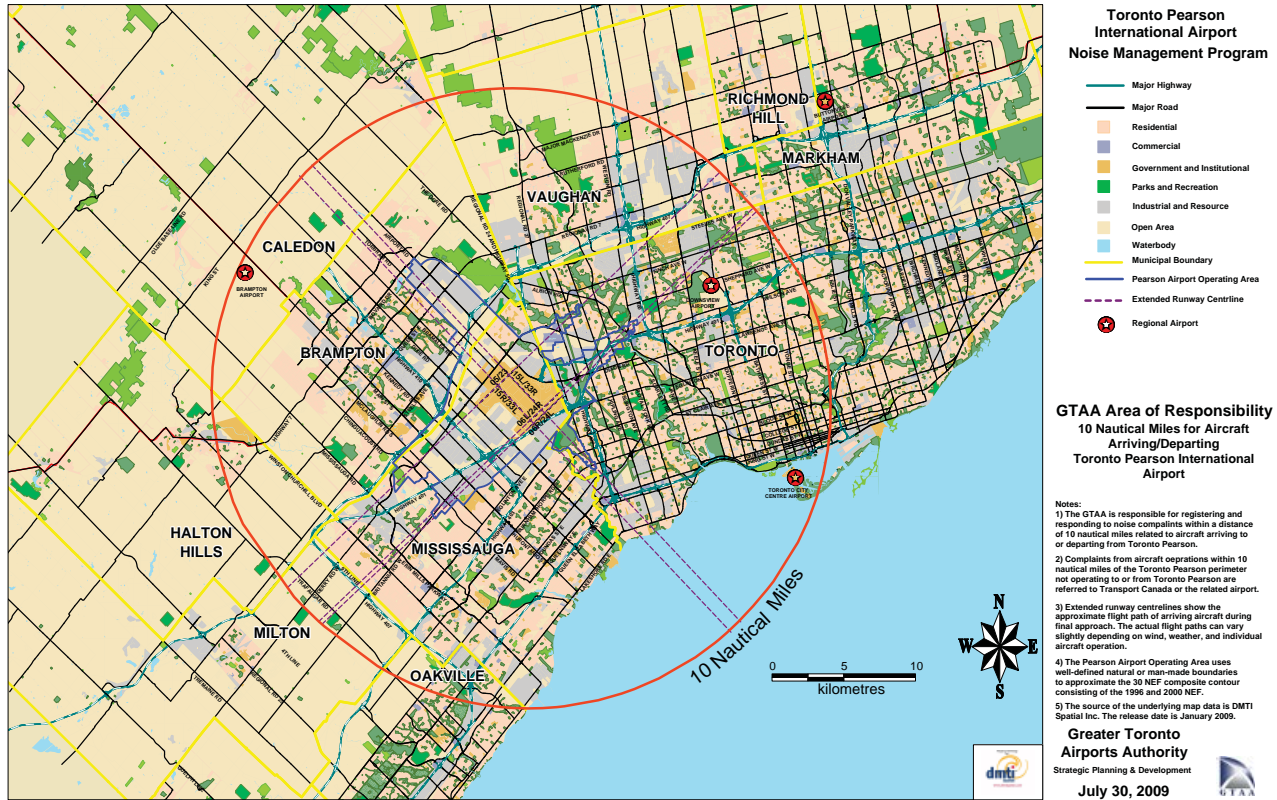


TORONTO
PEARSON

GTAA Area of Responsibility

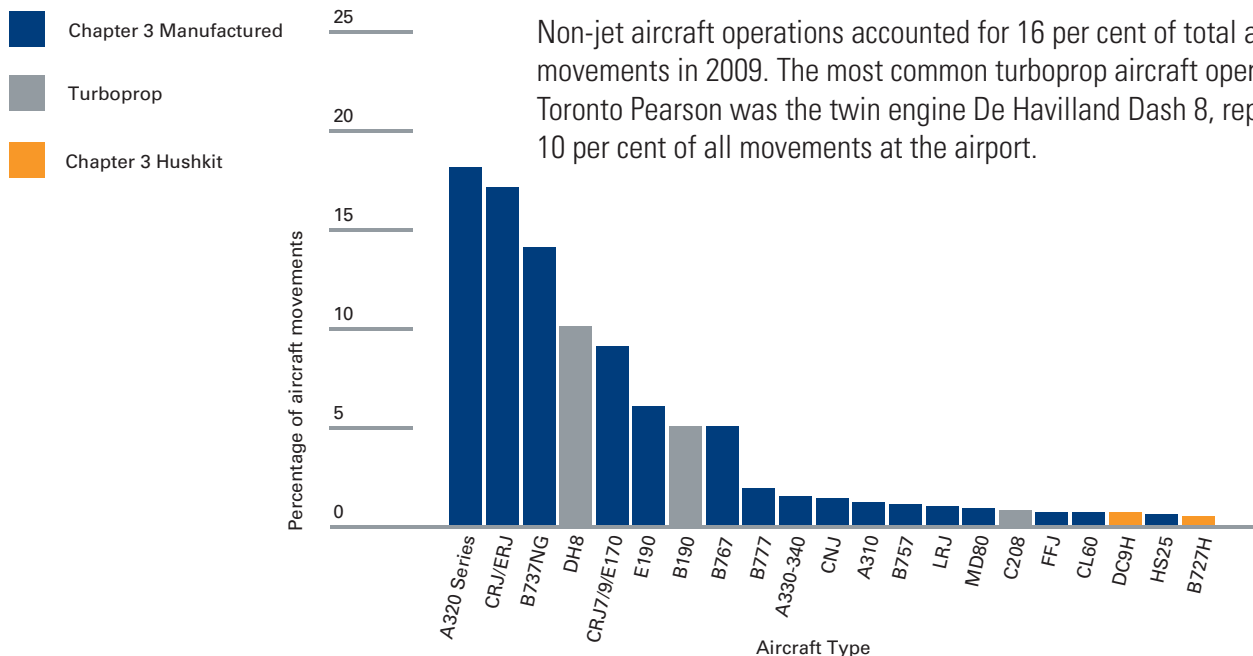
10 Nautical Miles for Aircraft Arriving/Departing at Toronto Pearson

Figure 1



Annual Percentage of Specific Movements by Aircraft Type

Figure 2

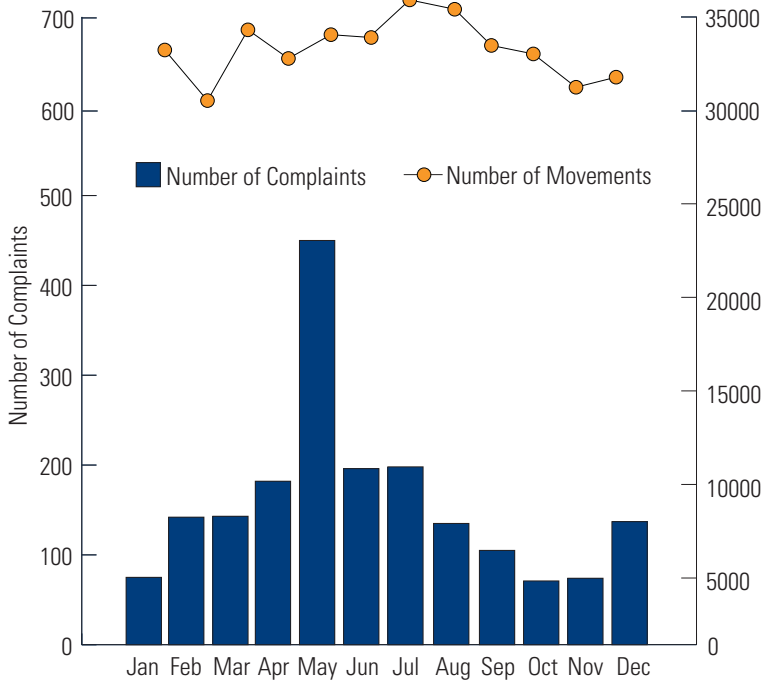


Operations by the Airbus A320 series, the Boeing 737 next generation (NG), Canadair Regional Jet (CRJ) and Embraer Regional Jet (ERJ) totalled just under 50 per cent of all aircraft movements. These aircraft were all manufactured to meet Chapter 3 requirements and are among the quietest aircraft that operate at the airport.

Non-jet aircraft operations accounted for 16 per cent of total aircraft movements in 2009. The most common turboprop aircraft operating at Toronto Pearson was the twin engine De Havilland Dash 8, representing 10 per cent of all movements at the airport.

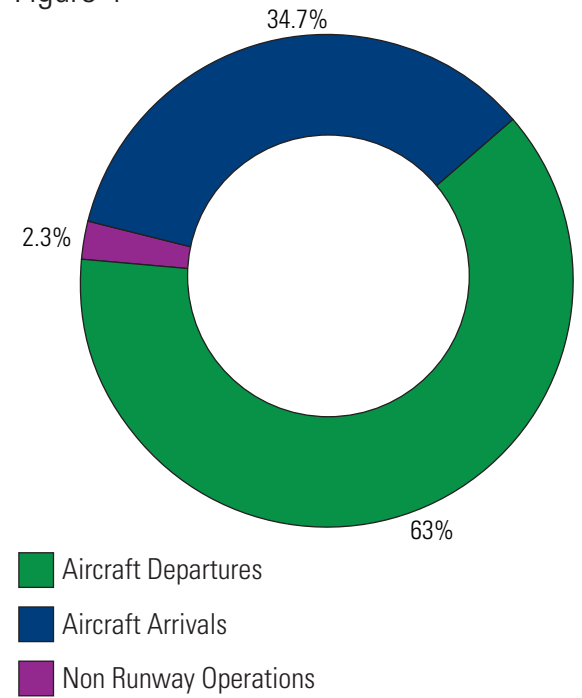
Monthly Comparison of Runway Movements and Noise Complaints

Figure 3



Noise Complaints by Operation

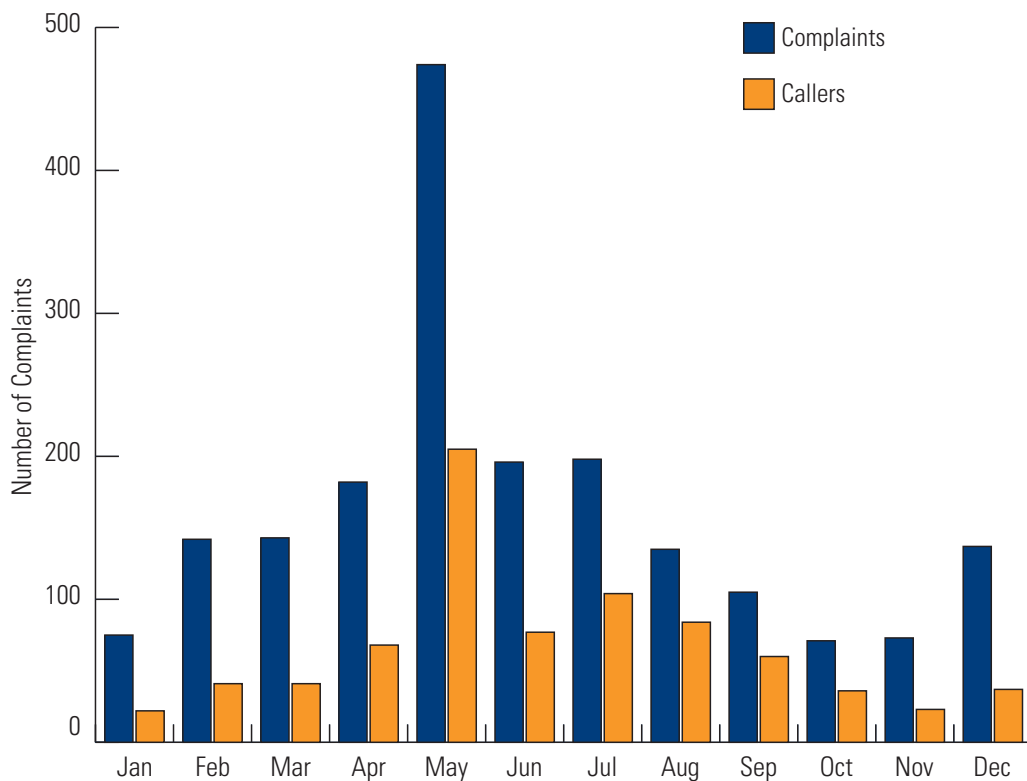
Figure 4



Non Runway Operations include ILS inspections, maintenance run-ups, helicopter operations and unknown sources.

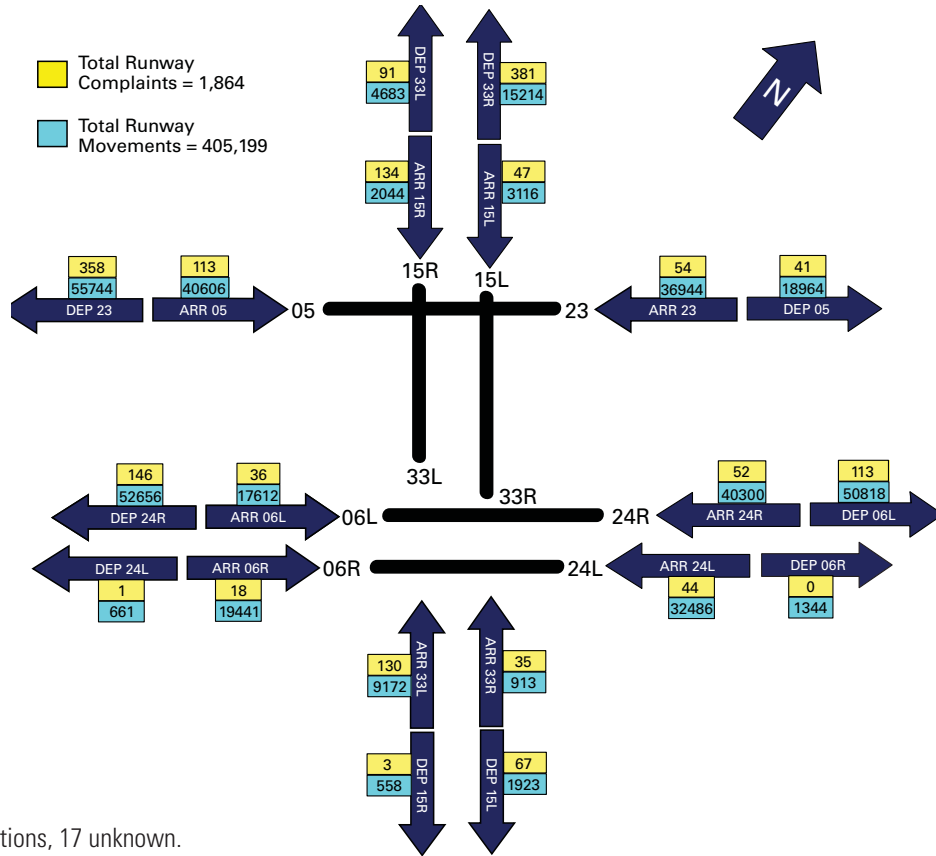
Monthly Comparison of Noise Complaints and Callers

Figure 5



Comparison of Noise Complaints by Runway Operation

Figure 6

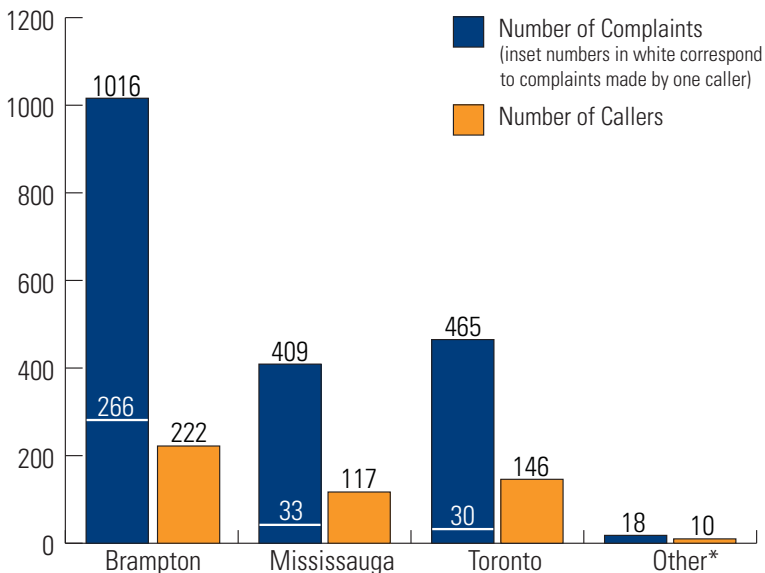


Note: Non Runway Complaints

8 missed approaches, 19 ILS inspections, 17 unknown.

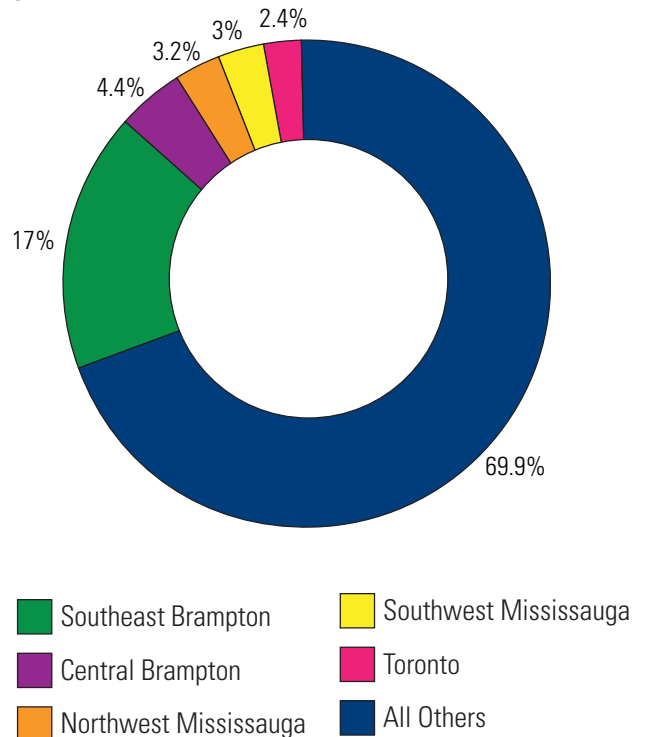
Comparison of Noise Complaints by Municipality

Figure 7



Top Five Callers vs. All Other Callers

Figure 8



Comparison of Aircraft Movement and Noise Complaints by Runway Operation

Figure 9

ARRIVALS			DEPARTURES		
Runway	Movements	Complaints	Runway	Movements	Complaints
Arrive 23	36944	54	Depart 05	18964	41
Arrive 24R	40300	52	Depart 06L	50818	113
Arrive 24L	32486	44	Depart 06R	1344	0
Arrive 33R	913	35	Depart 15L	1923	67
Arrive 33L	9172	130	Depart 15R	558	3
Arrive 06R	19441	18	Depart 24L	661	1
Arrive 06L	17612	36	Depart 24R	52656	146
Arrive 05	40606	113	Depart 23	55744	358
Arrive 15R	2044	134	Depart 33L	4683	91
Arrive 15L	3116	47	Depart 33R	15214	381
Total Arr	202634	663	Total Dep	202565	1201
Total All Runways				405199	1864
Non Runway Complaints*					44
Total Complaints					1908

*The remaining 44 complaints were registered against missed approaches, ILS inspections, maintenance run-ups, helicopter operations and unknown sources.

Monthly Enforcement Investigations

Figure 10

