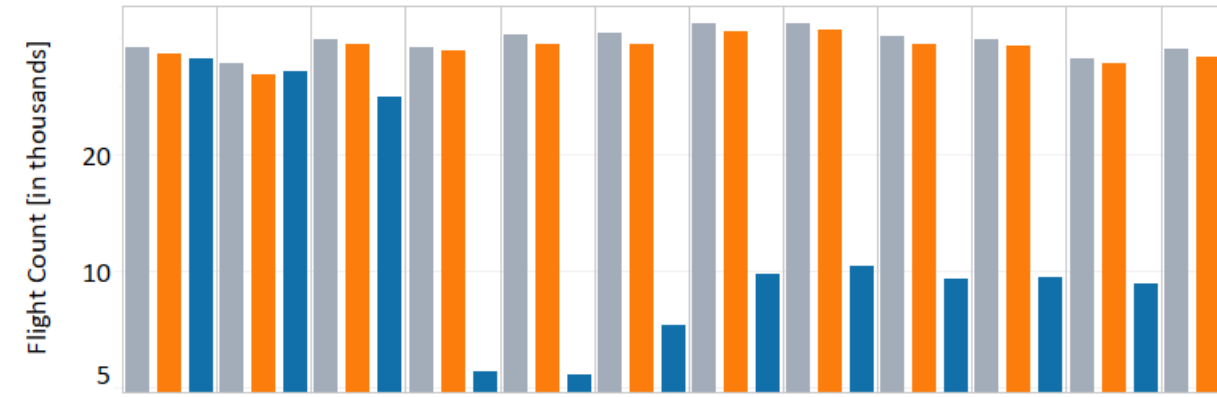
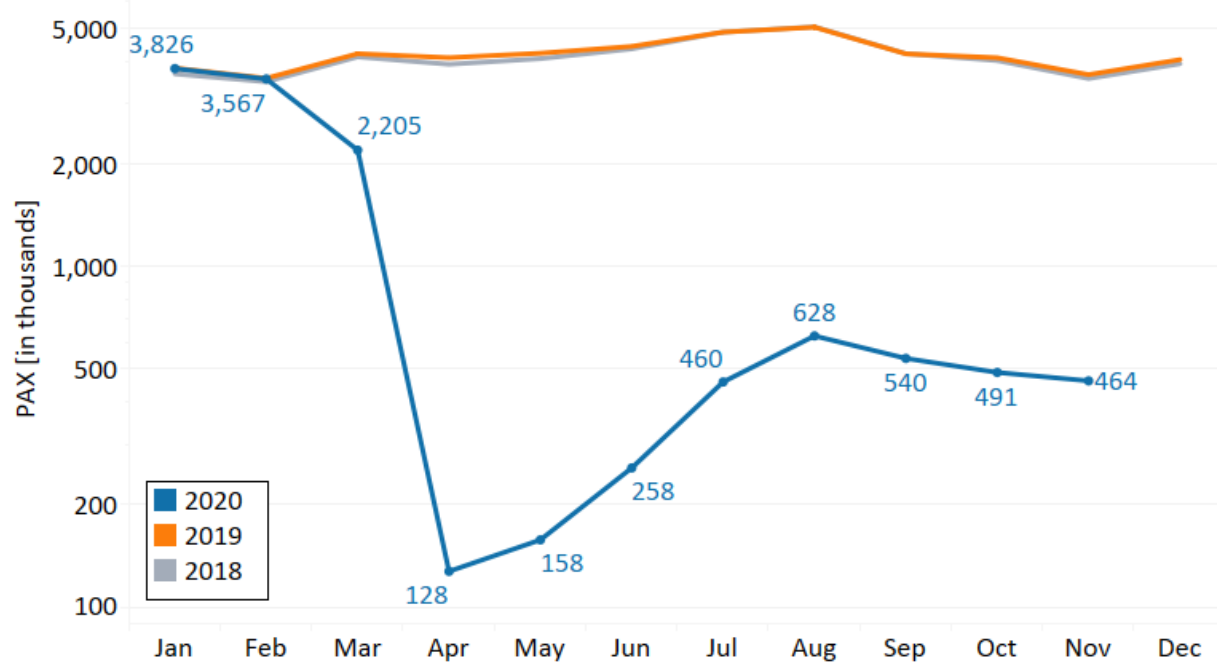


Toronto Pearson



Airport Traffic Summary



November

YTD

	2020	2019	YOY%	2020	2019	YOY%
Domestic	256,008	1,302,320	-80.34%	5,160,411	16,982,467	-69.61%
International	145,362	1,283,522	-88.67%	4,612,806	16,738,421	-72.44%
Transborder	62,414	1,086,824	-94.26%	2,952,292	12,711,456	-76.77%
Total	463,784	3,672,666	-87.37%	12,725,509	46,432,344	-72.59%
Terminal	8,163	31,991	-74.48%	148,571	388,422	-61.75%
Non-Terminal	1,176	2,600	-54.77%	15,045	28,806	-47.77%
Total	9,339	34,591	-73.00%	163,616	417,228	-60.78%

Note: Above data is preliminary and subject to subsequent adjustments as new information is obtained. Sector definitions are independent and subject to the Greater Toronto Airports Authority.

Passengers

	Q1				Q2				Q3				Q4			Total	Total		
	January	February	March	Total	April	May	June	Total	July	August	September	Total	October	November	December			Total	
2020	Domestic	1,243,996	1,177,998	758,554	3,180,548	64,665	94,400	170,359	329,424	299,474	428,722	357,091	1,085,287	309,144	256,008	0	565,152	5,160,411	
		-2.71%	0.24%	-44.05%	-16.51%	-95.36%	-94.09%	-90.05%	-92.99%	-84.42%	-78.70%	-78.26%	-80.54%	-80.57%	-80.34%	-100.00%	-86.91%	-71.96%	
	International	1,542,493	1,359,628	866,946	3,769,067	49,495	52,711	63,367	165,573	119,046	148,858	136,045	403,949	128,855	145,362	0	274,217	4,612,806	
		1.43%	-0.95%	-45.80%	-16.11%	-96.74%	-96.45%	-95.94%	-96.37%	-93.16%	-91.70%	-90.89%	-91.97%	-90.58%	-88.67%	-100.00%	-93.41%	-74.72%	
	Transborder	1,039,459	1,029,562	579,788	2,648,809	13,841	11,268	23,802	48,911	41,753	50,859	46,661	139,273	52,885	62,414	0	115,299	2,952,292	
		0.05%	-0.63%	-54.53%	-20.93%	-98.85%	-99.03%	-97.97%	-98.62%	-96.61%	-95.94%	-95.72%	-96.11%	-95.44%	-94.26%	-100.00%	-96.58%	-78.67%	
	Total	3,825,948	3,567,188	2,205,288	9,598,424	128,001	158,379	257,528	543,908	460,273	628,439	539,797	1,628,509	490,884	463,784	0	954,668	12,725,509	
		-0.33%	-0.47%	-47.87%	-17.63%	-96.89%	-96.27%	-94.21%	-95.75%	-90.60%	-87.58%	-87.23%	-88.52%	-88.08%	-87.37%	-100.00%	-91.95%	-74.80%	
	2019	Domestic	1,278,673	1,175,188	1,355,823	3,809,684	1,394,430	1,596,605	1,711,556	4,702,591	1,921,754	2,012,355	1,642,757	5,576,866	1,591,006	1,302,320	1,423,261	4,316,587	18,405,728
			1.92%	-1.29%	-1.01%	-0.13%	1.16%	3.43%	1.74%	2.14%	0.91%	0.50%	1.30%	0.88%	2.08%	0.36%	2.10%	1.56%	1.14%
International		1,520,800	1,372,735	1,599,499	4,493,034	1,517,888	1,486,643	1,562,487	4,567,018	1,739,743	1,794,246	1,493,636	5,027,625	1,367,222	1,283,522	1,511,743	4,162,487	18,250,164	
		5.25%	5.69%	4.29%	5.04%	5.93%	4.95%	2.36%	4.37%	-1.13%	-0.72%	-2.02%	-1.25%	2.86%	7.57%	4.32%	4.81%	3.01%	
Transborder		1,038,950	1,036,096	1,275,059	3,350,105	1,206,022	1,161,758	1,171,312	3,539,092	1,233,109	1,253,227	1,090,590	3,576,926	1,158,509	1,086,824	1,128,869	3,374,202	13,840,325	
		4.79%	2.52%	3.03%	3.41%	6.93%	2.67%	0.82%	3.45%	0.28%	-0.83%	0.50%	-0.05%	0.66%	0.07%	1.75%	0.83%	1.87%	
Total		3,838,423	3,584,019	4,230,381	11,652,823	4,118,340	4,245,006	4,445,355	12,808,701	4,894,606	5,059,828	4,226,983	14,181,417	4,116,737	3,672,666	4,063,873	11,853,276	50,496,217	
		4.00%	2.40%	2.16%	2.83%	4.55%	3.75%	1.71%	3.29%	0.02%	-0.26%	-0.10%	-0.12%	1.93%	2.68%	2.82%	2.46%	2.01%	
2018		Domestic	1,254,606	1,190,517	1,369,677	3,814,800	1,378,387	1,543,589	1,682,289	4,604,265	1,904,451	2,002,247	1,621,749	5,528,447	1,558,652	1,297,620	1,393,941	4,250,213	18,197,725
			2.80%	4.76%	4.01%	3.84%	2.82%	4.22%	3.06%	3.37%	2.86%	1.35%	1.48%	1.90%	-0.07%	-0.16%	0.60%	0.12%	2.25%
	International	1,444,901	1,298,811	1,533,754	4,277,466	1,432,862	1,416,490	1,526,527	4,375,879	1,759,580	1,807,177	1,524,488	5,091,245	1,329,178	1,193,251	1,449,134	3,971,563	17,716,153	
		6.93%	9.12%	11.27%	9.12%	4.76%	8.88%	9.36%	7.66%	6.70%	7.80%	8.77%	7.71%	7.13%	8.71%	6.59%	7.40%	7.97%	
	Transborder	991,457	1,010,670	1,237,565	3,239,692	1,127,885	1,131,499	1,161,732	3,421,116	1,229,699	1,263,740	1,085,158	3,578,597	1,150,968	1,086,058	1,109,404	3,346,430	13,585,835	
		2.44%	7.82%	7.47%	5.99%	3.88%	8.25%	6.88%	6.31%	3.97%	4.17%	5.79%	4.58%	3.49%	5.77%	6.96%	5.36%	5.54%	
	Total	3,690,964	3,499,998	4,140,996	11,331,958	3,939,134	4,091,578	4,370,548	12,401,260	4,893,730	5,073,164	4,231,395	14,198,289	4,038,798	3,576,929	3,952,479	11,568,206	49,499,713	
		4.28%	7.23%	7.65%	6.40%	3.83%	6.90%	6.21%	5.66%	4.49%	4.28%	5.12%	4.60%	3.23%	4.46%	4.50%	4.04%	5.14%	

Movements

	Q1				Q2				Q3				Q4				Total	
	January	February	March	Total	April	May	June	Total	July	August	September	Total	October	November	December	Total		
2020	Terminal	33,210	30,589	25,770	89,569	5,005	4,757	6,144	15,906	8,697	9,107	8,573	26,377	8,556	8,163		16,719	148,571
		-2.97%	1.67%	-28.79%	-10.88%	-85.49%	-86.67%	-82.93%	-85.02%	-77.85%	-76.99%	-75.94%	-76.96%	-75.74%	-74.48%	-100.00%	-83.41%	-64.79%
	Non-Terminal	2,284	2,310	2,400	6,994	557	683	1,129	2,369	1,137	1,234	1,001	3,372	1,134	1,176		2,310	15,045
		2.28%	-0.09%	-0.79%	0.43%	-79.80%	-77.34%	-60.22%	-72.48%	-52.01%	-50.80%	-65.57%	-56.68%	-60.20%	-54.77%	-100.00%	-70.54%	-51.77%
Total	35,494	32,899	28,170	96,563	5,562	5,440	7,273	18,275	9,834	10,341	9,574	29,749	9,690	9,339		19,029	163,616	
	-2.64%	1.54%	-27.04%	-10.15%	-85.07%	-85.94%	-81.27%	-84.08%	-76.38%	-75.43%	-75.16%	-75.67%	-74.58%	-73.00%	-100.00%	-82.48%	-63.89%	
2019	Terminal	34,225	30,088	36,191	100,504	34,501	35,676	35,989	106,166	39,264	39,586	35,638	114,488	35,273	31,991	33,495	100,759	421,917
		-1.54%	-5.66%	-3.26%	-3.42%	-0.79%	-4.71%	-5.33%	-3.69%	-3.20%	-2.44%	-3.97%	-3.18%	-4.35%	-2.05%	-4.59%	-3.72%	-3.49%
	Non-Terminal	2,233	2,312	2,419	6,964	2,757	3,014	2,838	8,609	2,369	2,508	2,907	7,784	2,849	2,600	2,391	7,840	31,197
		-27.55%	-15.00%	8.82%	-13.22%	-13.38%	-10.64%	-16.75%	-13.61%	-23.08%	-20.05%	-12.18%	-18.30%	-6.93%	-8.09%	4.59%	-4.11%	-12.60%
Total	36,458	32,400	38,610	107,468	37,258	38,690	38,827	114,775	41,633	42,094	38,545	122,272	38,122	34,591	35,886	108,599	453,114	
	-3.65%	-6.40%	-2.59%	-4.12%	-1.85%	-5.20%	-6.27%	-4.51%	-4.60%	-3.71%	-4.64%	-4.31%	-4.55%	-2.53%	-4.03%	-3.74%	-4.18%	
2018	Terminal	34,759	31,894	37,412	104,065	34,777	37,440	38,015	110,232	40,561	40,577	37,111	118,249	36,878	32,661	35,108	104,647	437,193
		0.85%	3.67%	5.73%	3.43%	4.38%	6.05%	2.45%	4.26%	1.40%	1.30%	0.93%	1.22%	0.78%	-1.38%	0.72%	0.08%	2.21%
	Non-Terminal	3,082	2,720	2,223	8,025	3,183	3,373	3,409	9,965	3,080	3,137	3,310	9,527	3,061	2,829	2,286	8,176	35,693
		15.13%	-1.98%	-30.62%	-7.29%	20.16%	9.05%	-0.90%	8.53%	0.03%	-2.58%	-8.49%	-3.92%	-9.84%	-17.16%	-20.90%	-15.71%	-4.70%
Total	37,841	34,614	39,635	112,090	37,960	40,813	41,424	120,197	43,641	43,714	40,421	127,776	39,939	35,490	37,394	112,823	472,886	
	1.88%	3.20%	2.71%	2.58%	5.54%	6.29%	2.16%	4.60%	1.30%	1.01%	0.09%	0.82%	-0.12%	-2.85%	-0.93%	-1.26%	1.65%	